

**MEIJI**  
-LABAX-

# RF HAND REFRACTOMETER

MEIJI-LABAX Hand refractometers are widely used for the quality control in manufacture of syrup, beverage supply, jam, canned foods and other food products and also for checking density of sugar, etc. at research laboratories and other various fields. Packed in imitation leather case with screwdriver for scale adjustment.

## HAND REFRACTOMETER STANDARD TYPE

CAT. NO. RF-205

Type	Range	Accuracy	Light Adopting
05	0-32%	±0.2	Reflection System
10	28-62%	±0.2	"
15	45-82%	±0.5	"
20	58-92%	±0.5	"

## HAND REFRACTOMETER HIGH-CONTRAST TYPE

CAT. NO. RF-210

Improved model adopting transmitting system and using an orange color illuminating filter to increase boundary line contrast.

Type	Range	Accuracy	Light Adopting
05	0-32%	±0.2	Transmitting System
10	28-62%	±0.2	"
15	45-82%	±0.5	"
20	58-92%	±0.5	"

## HAND REFRACTOMETER UNIVERSAL TYPE

CAT. NO. RF-215

This instrument has a wide range of measurement by specific design for selection system of range.

Additional features are:

1. A reflection system is adopted.
2. An amici prism is built-in for color elimination to obtain a sharp image.
3. A special thermometer is provided so that measurement value can be easily corrected without correction table.

Type	Range	Accuracy	Light Adopting
05	0-90%	±0.2	Reflection System

**ISSCO**

Ph.(02) 9743 2588

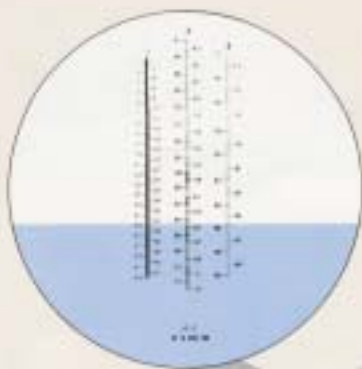
Fax.(02) 9736 2835



RF-205



RF-210



RF-215/05

# HAND REFRACTOMETER

## CLINICAL HAND REFRACTOMETER

CAT. NO. RF-220

As laborious and time consuming laboratory methods were formerly needed for protein analysis, the Clinical Refractometer has become widely accepted in the clinical laboratory for simply, precise and rapid determination of protein concentration, specific gravity or refractive index in serum or urine.

### Features:

1. Small sample volume required as little as 0.2ml.
2. No special training and knowledge required to use.
3. Within a few seconds, measurement value obtained.
4. Provided with two scales in a field of view, for serum protein, and urine specific gravity.

### Specifications Range & Accuracy:

For Serum Protein . . . . . 0. – 12% gms/100ml ( $\pm 0.2$ )

For Urine Specific Gravity . . . 1.000–1.040 ( $\pm 0.0005$ )

Size and Weight: 150mm long 280g nett

## SALINITY HAND REFRACTOMETER

CAT. NO. RF-235

For Marine Biologist and Oceanographers. The instrument is small portable, and you can make an immediate analysis anywhere.

### Features:

1. Unique optical design, quick and easy determination of Salinity of sea water.
2. The use of orange filter produces a sharp and accurate measurement.
3. Prism-house is hermetically sealed and is waterproof.

### Specifications Range & Accuracy:

Range of measurement: 160‰ (0–16%)

Minimum scale: 2‰ (0.2%)

Referential percentage of sodium chloride shown in the Chronological Table of Science of Tokyo Astronomical Observatory is as follows:

0°C – 26.28%      20°C – 26.38%

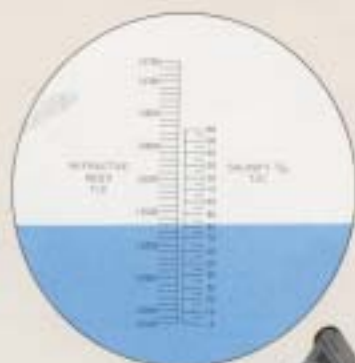
60°C – 27.05%      100°C – 29.02%

Accessories: Portable case and a small screwdriver.

Size and Weight: 132mm long 240g nett.



RF-220



RF-235

CAT. NO. MA650  
LENS CLEANING PAPER  
Chemically treated  
100% Cotton  
20 sheets/pack  
Size: 130mm x 67mm



**MEIJI LABAX CO., LTD.**  
TOKYO JAPAN

**ISSCO**

Ph.(02) 9743 2588

Fax.(02) 9736 2835